

Angella STORRIER REAL ESTATE



166 Sloane Street Goulburn NSW

Central Piece of Goulburn History!

Circa 1848, two-storey Victorian Terrace, in the heart of Goulburn, just one block from the main street and 2 mins walk to Goulburn Railway Station.

* High ceilings, 9 pane double-sash windows, and wide skirting boards are some of the beautiful character features from a by-gone era.

* 3 sizeable bedrooms, main with built-in, and access to the balcony, with views of rolling hills and the Rocky Hill War Memorial, over the railway.

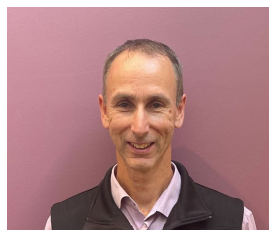
* 2 bedrooms are upstairs, with one conveniently located on the ground floor.

3 1

Price : \$ 460,000

Land Size : 139.1 sqm

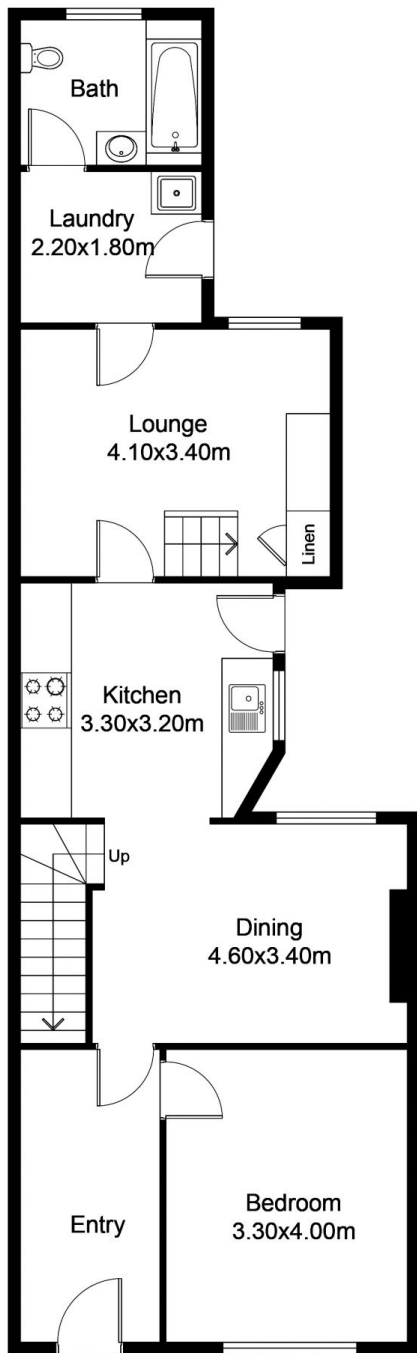
View : <https://www.angellastorrierrealestate.com.au/sale/nsw/southern-tablelands/goulburn/residential/house/7789998>



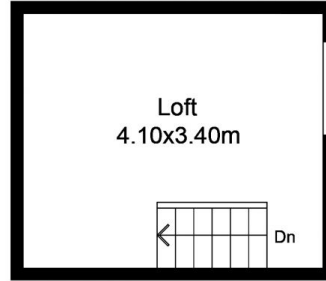
Brett Storrier
02 4821 9842

© 2024 - Angella Storrier Real Estate

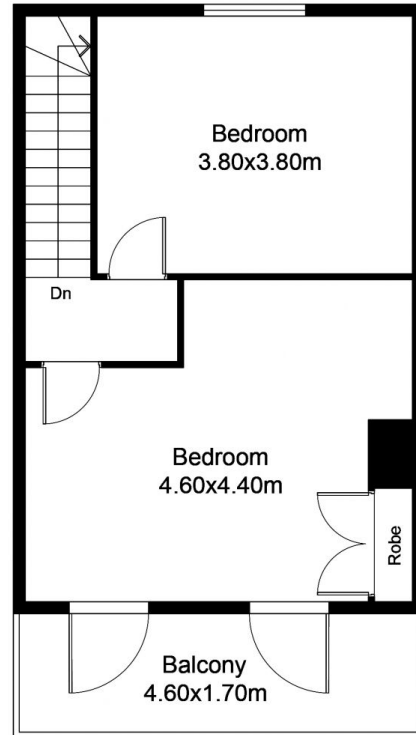
This information has been provided to us by third parties and we do not accept any responsibility for its accuracy. You should make your own enquiries and check the information so as to determine whether or not this information is in fact accurate. You must make your own assessment and obtain professional advice if necessary. All boundary markings indicative only



GROUND FLOOR PLAN



LOFT PLAN



FIRST FLOOR PLAN

This floor plan including furniture, fixture measurements and dimensions are approximate and for illustrative purposes only. All enquiries must be directed to the agent, vendor or party representing this floor plan.

166 Sloane Street, Goulburn

© 2024 - Angella Storrier Real Estate

This information has been provided to us by third parties and we do not accept any responsibility for its accuracy. You should make your own enquiries and check the information so as to determine whether or not this information is in fact accurate. You must make your own assessment and obtain professional advice if necessary. All boundary markings indicative only