



**24 Monastery Drive Goulburn NSW**

Large Home with Lovely Street Appeal

4 2 2

This solid brick and tile home is very spacious, with loads of features to suit a growing family.

\* Four bedrooms, main with en suite and walk-in robe, all others with built-ins.

\* Great living space, with large carpeted lounge room at the front, and a spacious tiled rumpus at the rear, with double doors, allowing for extra open space, or a secluded room for movie night or the football.

\* There is also a study/ extra small living at the east-facing front of the home.

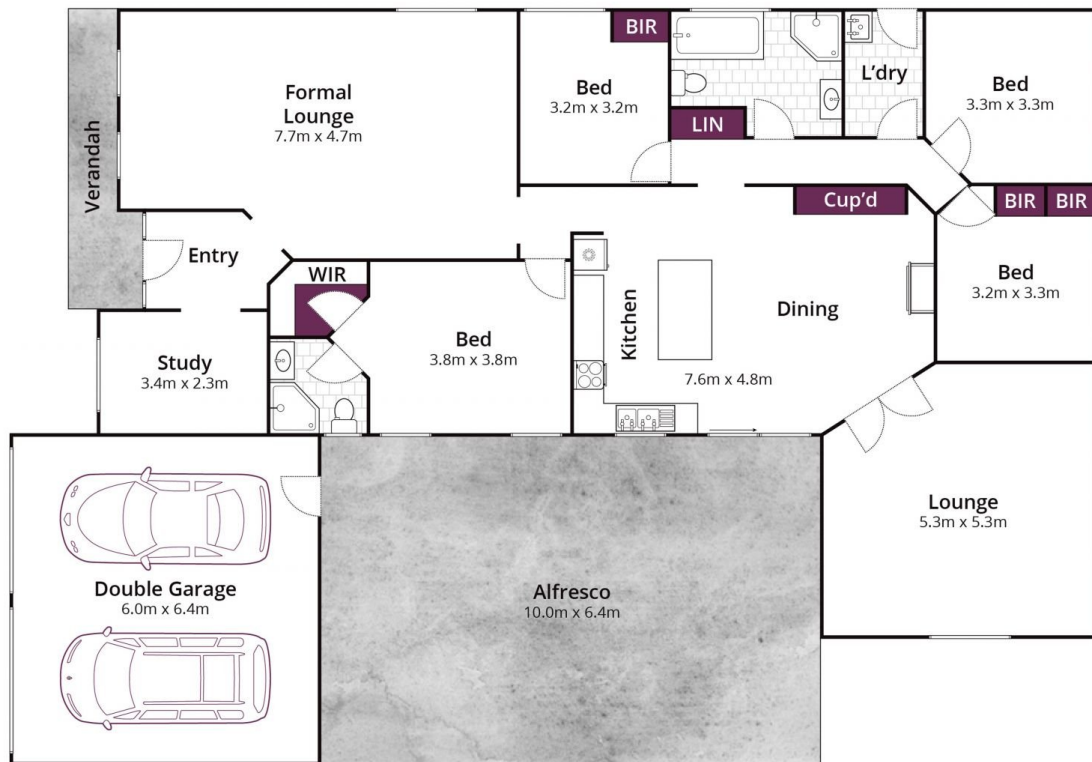
\* Kitchen with quality stainless steel appliances, breaky bar

**Land Size** : 998.8 sqm

**View** : <https://www.angellastorrierrealestate.com.au/sale/nsw/southern-tablelands/goulburn/residential/house/7714192>



**Brett Storrier**  
**02 4821 9842**



Approx House Area 198m<sup>2</sup>

Whilst [bwrm.com.au](http://bwrm.com.au) has made every attempt to ensure the accuracy of the floor plan contained here, measurements are approximate and no responsibility is taken for any error, omission, or mis-statement. This plan is for illustrative purposes only.

**24 Monastery Drive, Goulburn**

*Angella*  
**STORRIER REAL ESTATE**

© 2024 - Angella Storrier Real Estate

This information has been provided to us by third parties and we do not accept any responsibility for its accuracy. You should make your own enquiries and check the information so as to determine whether or not this information is in fact accurate. You must make your own assessment and obtain professional advice if necessary. All boundary markings indicative only