



8 Llewellyn Avenue Goulburn NSW

Solid Home, Lots of Living Space; Terrific Location!

Bigger than it looks, this one is a real surprise packet; located in a highly desirable area, close to schools, TAFE, the upgraded Aquatic Centre and recently upgraded Hospital.

Brick and tile, with four to five bedrooms, four with built-ins; the one without is an ideal study.

Add to this, a big array of living space options, double garage, one half with remote entry, and a sizeable yard, there is space for the whole family!

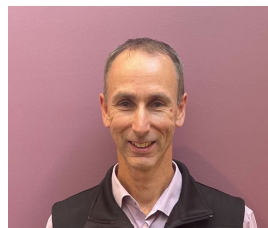
Upstairs is a lovely formal lounge and dining area, the latter of which, opens to a second sunny living space, with access to the rear yard.

4 2 2

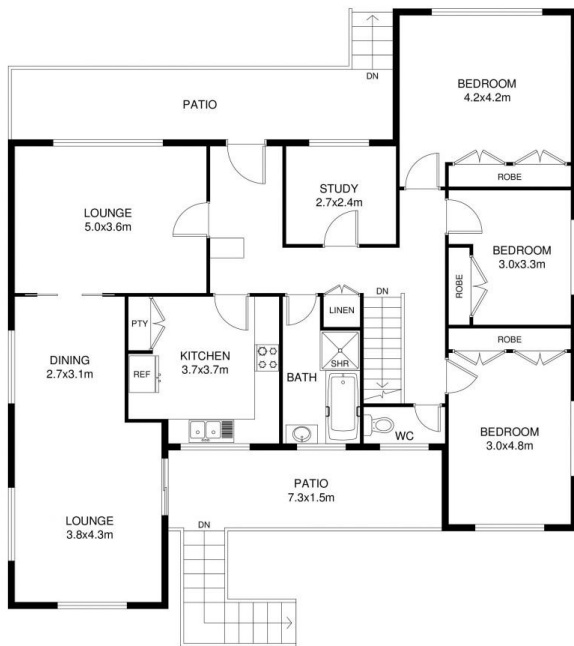
Price : \$ 730,000

Land Size : 683 sqm

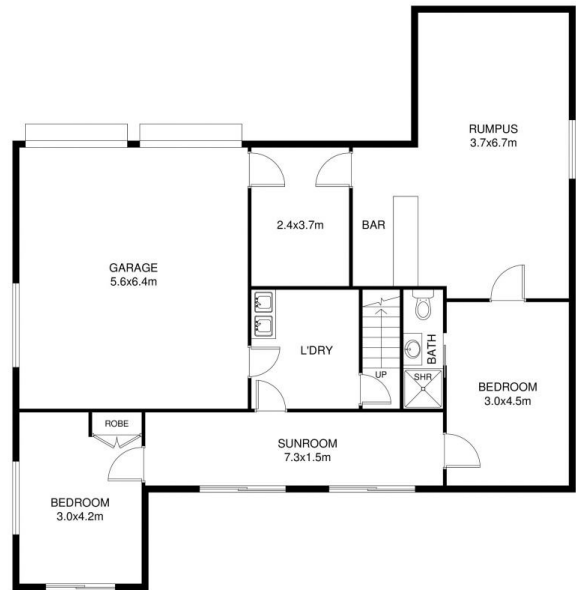
View : <https://www.angellastorrierrealestate.com.au/sale/nsw/southern-tablelands/goulburn/residential/house/7412316>



Brett Storrier
02 4821 9842



FIRST FLOOR PLAN



GROUND FLOOR PLAN

This floor plan including furniture, fixture measurements and dimensions are approximate and for illustrative purposes only. BoxBrownie.com gives no guarantee, warranty or representation as to the accuracy and layout. All enquiries must be directed to the agent, vendor or party representing this floor plan.

8 Llewellyn Avenue