



29 Ada Street Goulburn NSW

Potential to Subdivide into Three Blocks (STCA)

3 2 2

* Each block has further potential to build a dwelling, plus a secondary dwelling. (STCA)

* Existing home commands wonderful views

* Three (potentially four) bedroom home, main with ensuite, walk-in robe and built-ins, and built -ins in bedroom two.

* Spacious open plan lounge, dining and kitchen that opens to the deck; perfect for outdoor entertaining!

* Modern kitchen with great bench space, breakfast bar, a 5-burner gas stove, a dishwasher, pantry and more incredible views.

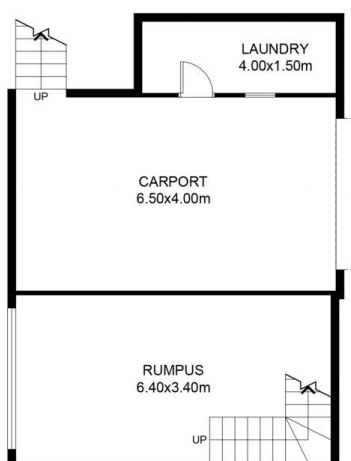
Price : \$745,000
Land Size : 2029 sqm
View : <https://www.angellastorrierrealestate.com.au/sale/nsw/southern-tablelands/goulburn/residential/house/7344728>



Angella Storrier
02 4821 9842



FIRST FLOOR



GROUND FLOOR

This floor plan including furniture, fixture measurements and dimensions are approximate and for illustrative purposes only.
All enquiries must be directed to the agent, vendor or party representing this floor plan.