



**25 Healey Street Goulburn NSW**

Quiet Cul-de-sac Near the Park

Located in a nice quiet area, with a nearby park and off-leash dog run.

Property features 3 bedrooms, spacious living both inside and out, and narrow vehicle access to the rear yard.

On a rectangular-shaped lot of approximately 808sqm, with an oversized single garage, plus workshop/ storage, separate carport and garden shed.

Living consists of a large L-shaped lounge and dining room, generous family/ dining off the kitchen, and a spacious, enclosed outdoor entertaining area.

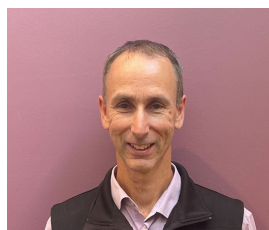
Kitchen with electrical upright stove and rangehood, plus a

3 1 2

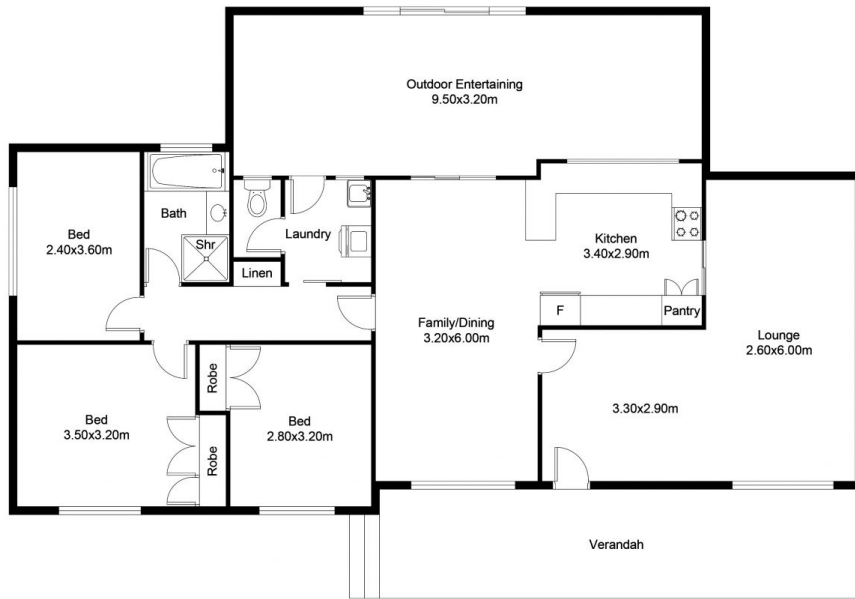
**Price** : \$ 580,000

**Land Size** : 808 sqm

**View** : <https://www.angellastorrierrealestate.com.au/sale/nsw/southern-tablelands/goulburn/residential/house/7273492>



**Brett Storrier**  
**02 4821 9842**



## FLOOR PLAN

This floor plan including furniture, fixture measurements and dimensions are approximate and for illustrative purposes only. All enquiries must be directed to the agent, vendor or party representing this floor plan.

25 Healey Street