



1790 Taralga Road Goulburn NSW

Quality Acreage with River Frontage

4  2  2 

"Riverview"

Ideally located rural property only 20kms north of Goulburn, and approx. only 2 hours from outer Sydney. With spectacular views overlooking the Tarlo River, this property has been in the same family for over 50 years. The main homestead was built in 1977 and there is an old 2 bedroom cottage which could be a good project.

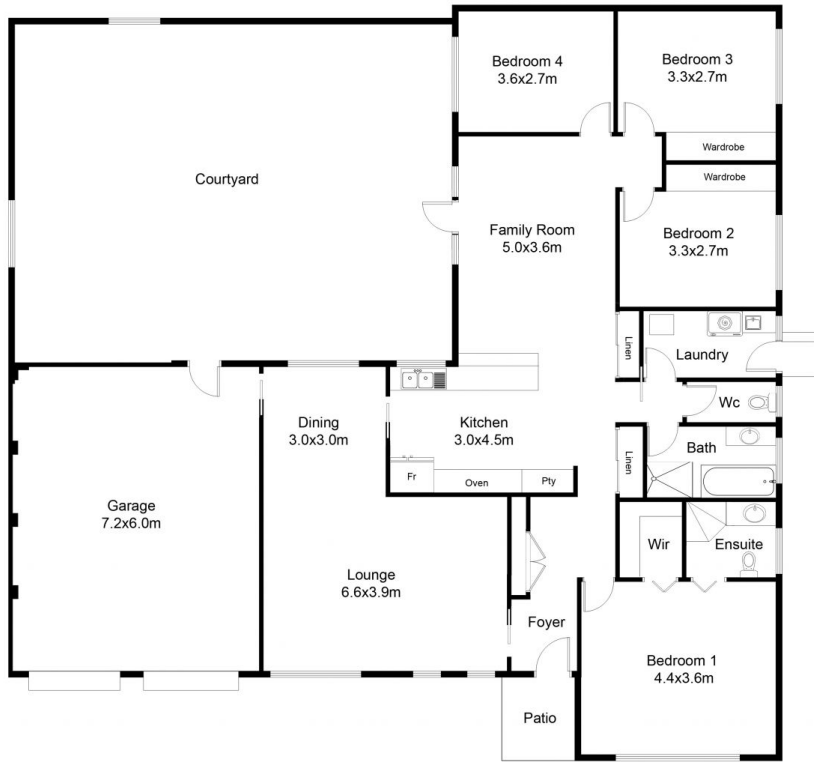
Land Size : 360000 sqm

View : <https://www.angellastorrierrealestate.com.au/sale/nsw/southern-tablelands/goulburn/residential/rural/7148408>

* Spacious open plan brick veneer home, separate living areas including formal lounge/dining room and family room with eating area.

* 4 bedrooms, main with en-suite, 3 bedrooms have large built-ins.

* Bathroom and laundry, plus 3 double storage/linen cupboards.



FLOOR PLAN

1790 Taralga Road