



**1130 Taralga Road, Tarlo Via Goulburn NSW**

Simply Superb. 74 Acres, Fantastic Accommodation & Infrastructure

Tucked into a fertile valley with superb views at every angle, within 10 minutes of Goulburn with sealed road to the gate and a sealed driveway.

Superbly renovated four bedroom homestead, with large living areas, a huge Tasmanian oak farmstyle kitchen and a spacious screened outdoor living area.

A 16x9m, D.A. approved "Shed House" is built to lock up stage with internal drainage and septic system, and a 4.7 kw solar system with adjacent 14x8m garage/studio with bathroom, and a 110,000 litre tank.

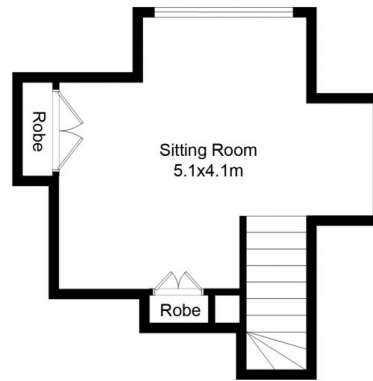
4 2 5

**Land Size** : 299000 sqm

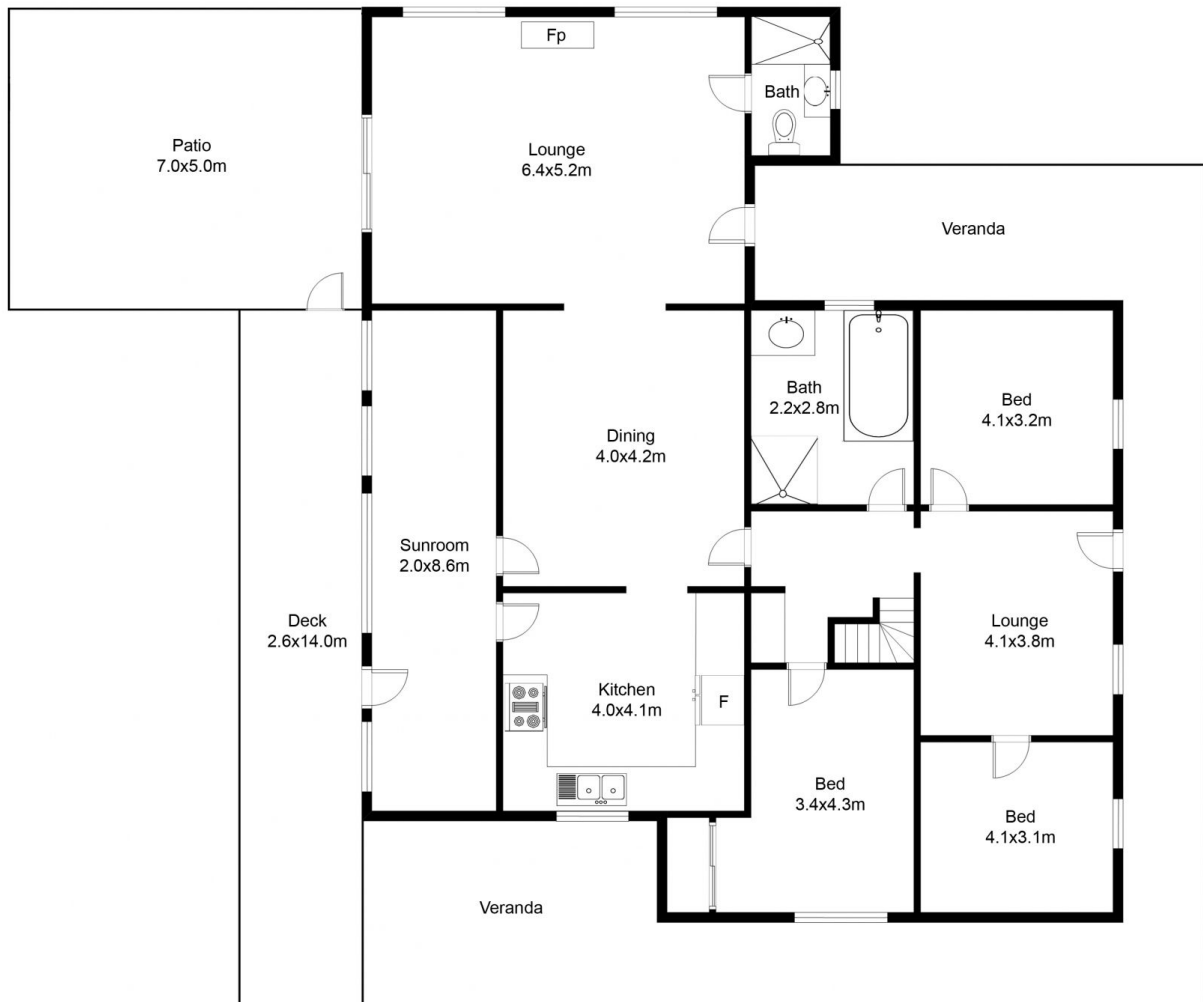
**View** : <https://www.angellastorrierrealestate.com.au/sale/nsw/southern-tablelands/goulburn/residential/rural/7134015>



**Angella Storrier**  
**02 4821 9842**



FIRST FLOOR PLAN



GROUND FLOOR PLAN

This floor plan including furniture, fixture measurements and dimensions are approximate and for illustrative purposes only. Boxbrownie.com gives no guarantee, warranty or representation as to the accuracy and layout. All enquiries must be directed to the agent, vendor or party representing this floor plan.

1130 Taralga Road

© 2024 - Angella Storrier Real Estate

This information has been provided to us by third parties and we do not accept any responsibility for its accuracy. You should make your own enquiries and check the information so as to determine whether or not this information is in fact accurate. You must make your own assessment and obtain professional advice if necessary. All boundary markings indicative only