



254 Middle Arm Via Goulburn NSW

25 Acres, Idyllic Quiet Lane and Only 9.5kms to the CBD.

A delightful lifestyle property, well fenced, with good pasture and three dams.

The prefabricated home has great space with four bedrooms, master is a huge retreat with en suite and study or dressing room, two other bedrooms are good size and have built ins, fourth bedroom is a single.

Large living room, a very large sunroom, and a beautiful big kitchen and dining room.

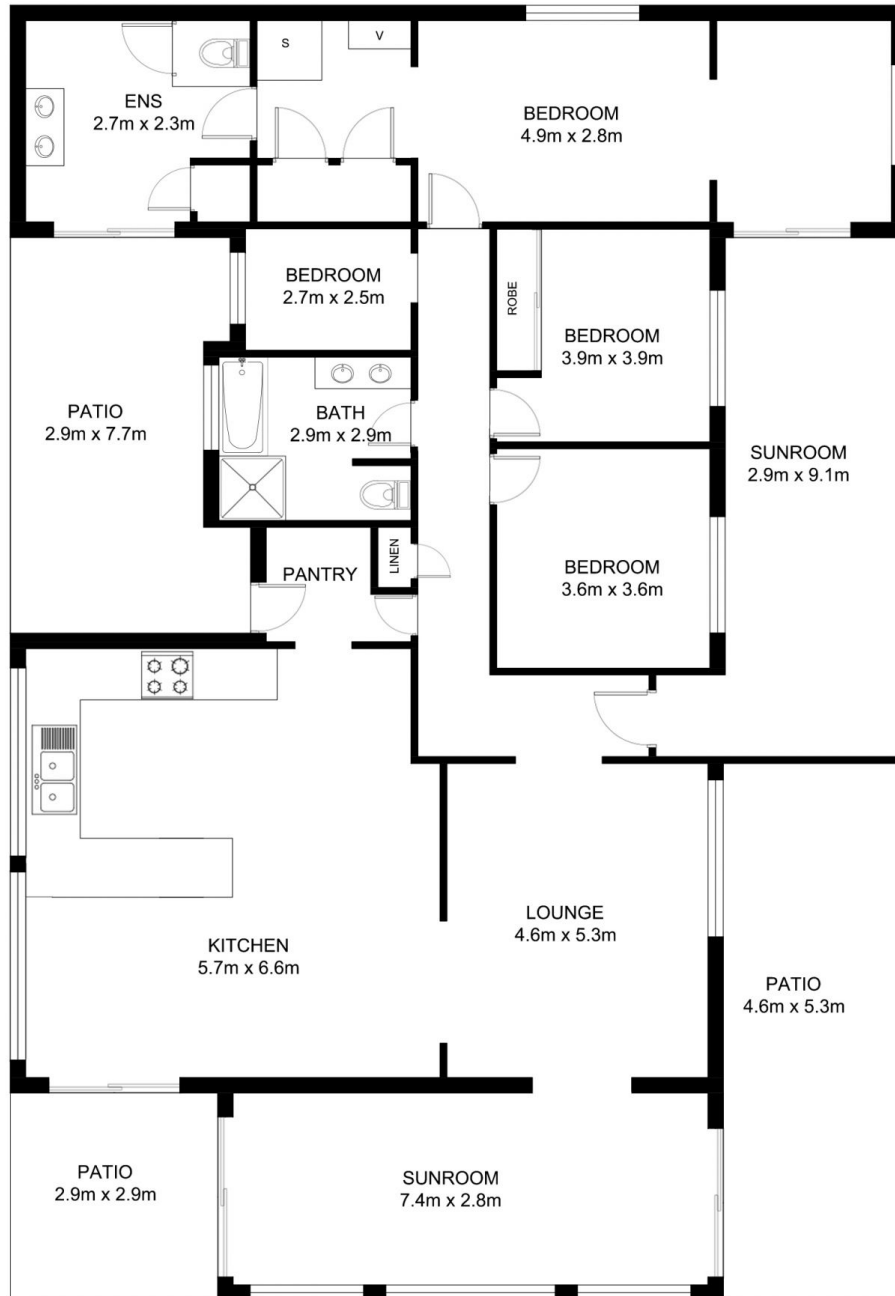
Inground swimming pool, large paved areas, excellent 5 bay shed, a separate shed and a large walled veggie garden.

4 2 7

Price : \$ 920,000
Land Size : 101300 sqm
View : <https://www.angellastorrierrealestate.com.au/sale/nsw/southern-tablelands/goulburn/residential/rural/7058753>



Angella Storrier
02 4821 9842



FLOOR PLAN

This floor plan including furniture, fixture measurements and dimensions are approximate and for illustrative purposes only. All enquiries must be directed to the agent, vendor or party representing this floor plan.

254 Campbell's Lane

© 2024 - Angella Storrier Real Estate

This information has been provided to us by third parties and we do not accept any responsibility for its accuracy. You should make your own enquiries and check the information so as to determine whether or not this information is in fact accurate. You must make your own assessment and obtain professional advice if necessary. All boundary markings indicative only