



455 Gurrundah Road Baw Baw NSW

Superb Rural Holding, Only 7.5 kms to Goulburn CBD,

Backing Onto the Wollondilly River

32 Ac (12.95 Ha)

of good country and excellent pasture, with a quality brick home, ample shedding, good infrastructure and an irrigation licence.

Ideal for a relaxing lifestyle away from the big smoke, yet only 8 minutes to the centre of fast growing Goulburn.

The 1-level, superbly presented brick home is protected by mature trees and shelter belts, is totally private and set back from the road. It features spacious formal and informal living areas, modernised kitchen and bathrooms, four bedrooms, main with ensuite and walk-in robe, others

4 2 8

Price : \$ 1,230,000

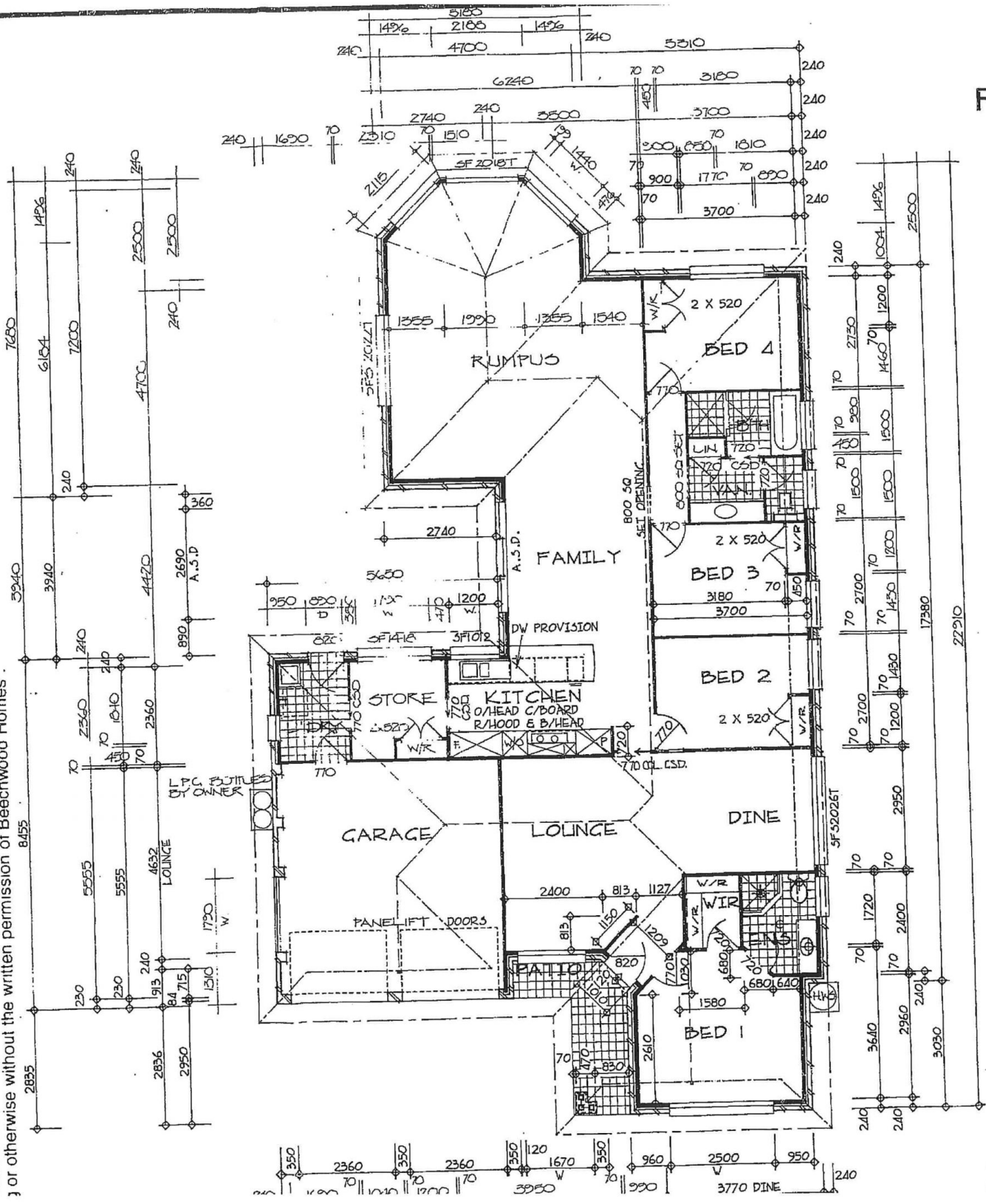
Land Size : 129500 sqm

View : <https://www.angellastorrierrealestate.com.au/sale/nsw/capital-monaro-snowy/baw-baw/residential/rural/7052327>



Angella Storrier
02 4821 9842

THIS RESERVED. NO PART OF THIS PLAN MAY BE REPRODUCED OR TRANSMITTED IN ANY FORM OR BY ANY MEANS, ELECTRONIC OR MECHANICAL, WITHOUT THE WRITTEN PERMISSION OF BEECHWOOD HOMES".



iHT. — All rights reserved. No part of this plan may be reproduced, stored in a retrieval system, or transmitted in any form or by any means, electronic, mechanical, photocopying, recording or otherwise without the written permission of Beechwood Homes".

FLOOR

