



377 Middle Arm Via Goulburn NSW

10 Ha, Lifestyle Property, 16km to Goulburn

4 2 2

A lovely mixture of cleared grazing land dotted with scattered trees and bush covered hills behind the home.

Subject to Council Approval a second dwelling could be erected on the property.

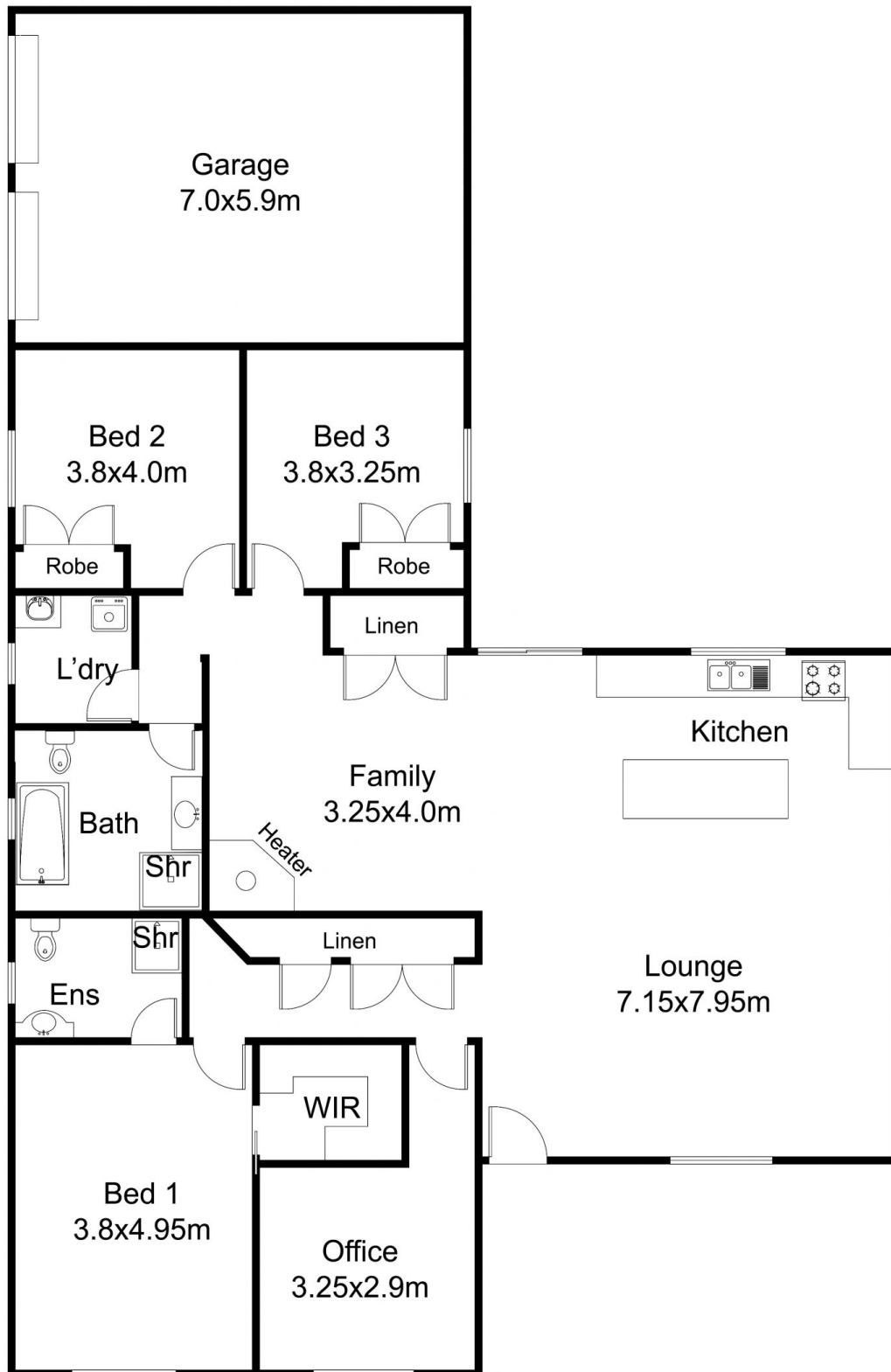
Total privacy and peace with the immaculate home secluded in a setting of native shrubs and trees with hidden gardens and pebbled paths meandering through.

A home that delights with a rich and inviting atmosphere enhanced by the warm tone throughout, large rooms and views of the enchanting gardens from every room.

Price : \$ 1,100,000
Land Size : 100500 sqm
View : <https://www.angellastorrierrealestate.com.au/sale/nsw/southern-tablelands/goulburn/residential/rural/7047586>



Angella Storrier
02 4821 9842



FLOOR PLAN

This floor plan including furniture, fixture measurements and dimensions are approximate and for illustrative purposes only. All enquiries must be directed to the agent, vendor or party representing this floor plan.

377 Forest Siding Road

© 2024 - Angella Storrier Real Estate

This information has been provided to us by third parties and we do not accept any responsibility for its accuracy. You should make your own enquiries and check the information so as to determine whether or not this information is in fact accurate. You must make your own assessment and obtain professional advice if necessary. All boundary markings indicative only