



164A Verner Street Goulburn NSW

A Lot of House & Lots of Potential.

Heaps of room in this attractive, well built brick home, situated in a fantastic location near TAFE, the Base Hospital and Victoria Park

Five bedrooms, main with en suite and walk in robe, others all with built ins.

Huge lounge and dining room, a large attractive kitchen open plan with the big family room, family bathroom upstairs, and a powder room downstairs.

Family room opens to the paved rear yard with a walled off side yard with raised garden bed and a garden shed.

A beaut double garage with internal entry.

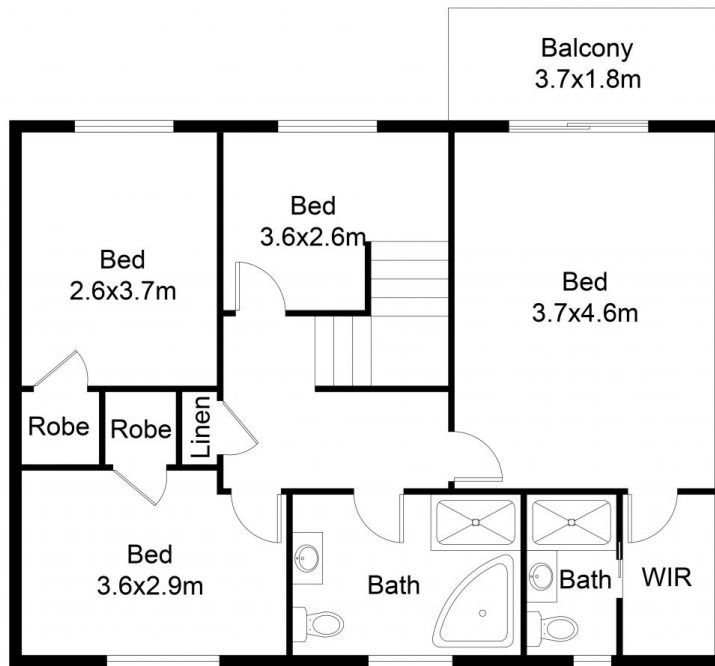
5 2 2

Land Size : 600.2 sqm

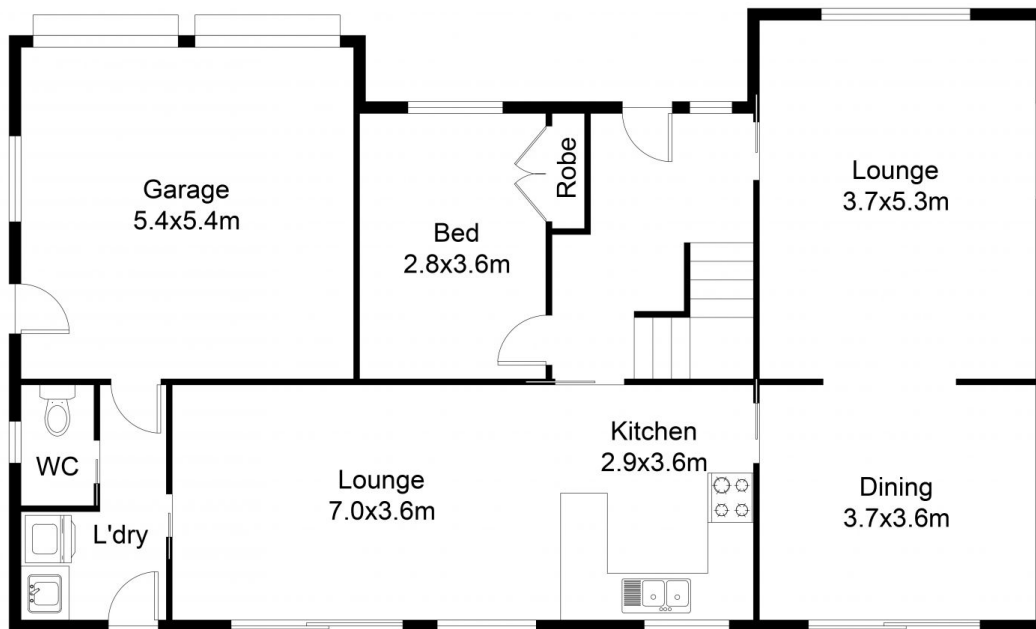
View : <https://www.angellastorrierrealestate.com.au/sale/nsw/southern-tablelands/goulburn/residential/house/7046492>



Angella Storrier
02 4821 9842



FIRST FLOOR



GROUND FLOOR

This floor plan including furniture, fixture measurements and dimensions are approximate and for illustrative purposes only. All enquiries must be directed to the agent, vendor or party representing this floor plan.

164a Verner Street

© 2024 - Angella Storrier Real Estate

This information has been provided to us by third parties and we do not accept any responsibility for its accuracy. You should make your own enquiries and check the information so as to determine whether or not this information is in fact accurate. You must make your own assessment and obtain professional advice if necessary. All boundary markings indicative only