



**4/28 Prince Street Goulburn NSW**  
Easy Care Unit in Fantastic Location

2 1 1

Only 550m to the new Goulburn Base Hospital, schools and child care.

The rear unit in a small complex of four. Excellent size, 217 sqm including the garage. Very quiet and private.

Two bedroom, main with ensuite and walk in robe.

Separate lounge room, open plan kitchen and family room.

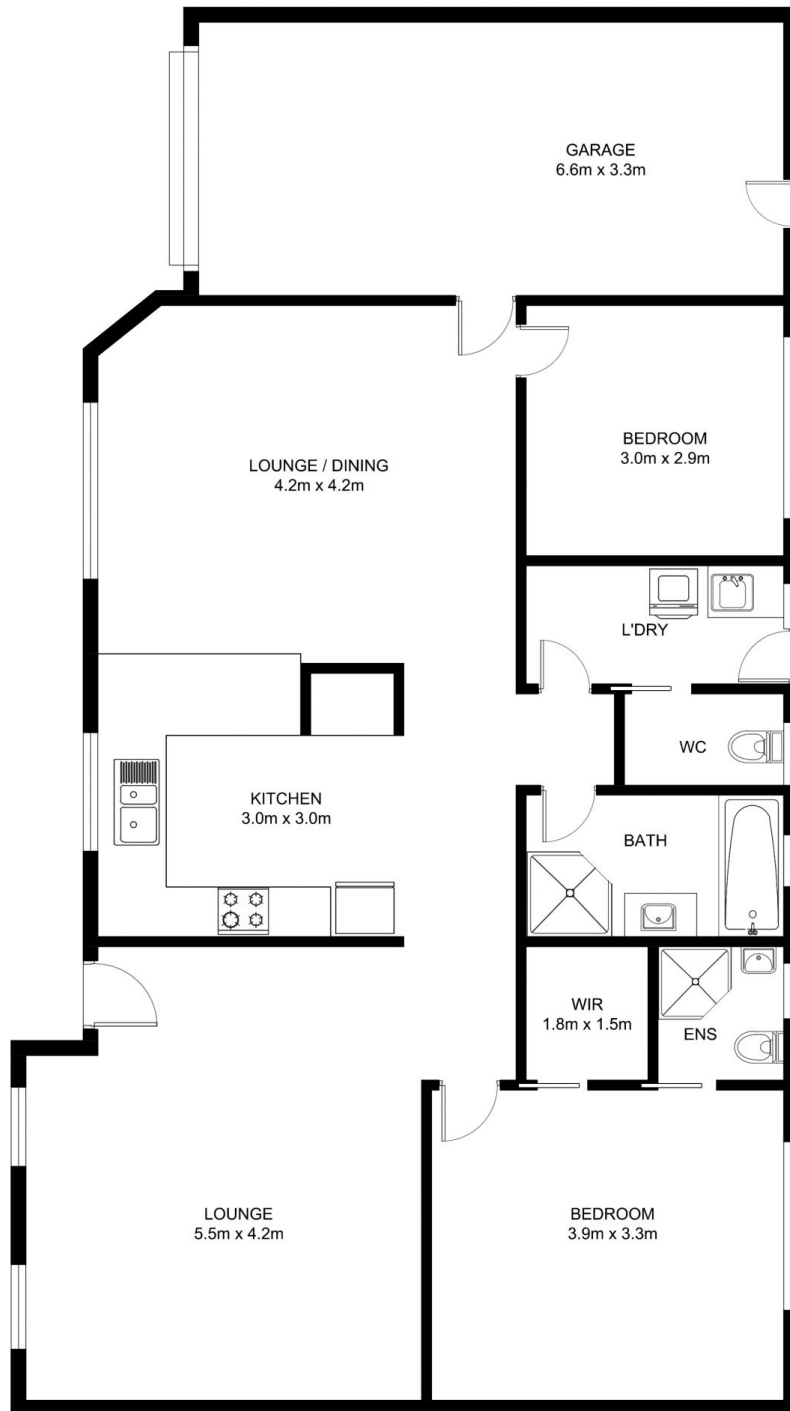
Main bathroom with bath, shower and toilet.

Gas cook top, range hood, electric oven, dishwasher, pantry and breakfast bar.

**Price** : \$ 433,000  
**Building Size** : 217 sqm  
**View** : <https://www.angellastorrierrealestate.com.au/sale/nsw/southern-tablelands/goulburn/residential/unit/6998602>



**Angella Storrier**  
**02 4821 9842**



## FLOOR PLAN

This floor plan including furniture, fixture measurements and dimensions are approximate and for illustrative purposes only. All enquiries must be directed to the agent, vendor or party representing this floor plan.

### 4/28 Prince Street

© 2024 - Angella Storrier Real Estate

This information has been provided to us by third parties and we do not accept any responsibility for its accuracy. You should make your own enquiries and check the information so as to determine whether or not this information is in fact accurate. You must make your own assessment and obtain professional advice if necessary. All boundary markings indicative only